

Family Hubs and Start for Life Offer Programme

Strong Families, Children, Young People Scrutiny Panel
15 March 2023

Presenter:

Alison Hinds
Deputy Director of Children's
Services

wolverhampton.gov.uk

The Best Start for Life A Vision for the 1,001 Critical Days

The Early Years Healthy Development Review Report

What the review heard:

- The commitment and passion from those working with families to help them give their baby the best start for life is impressive.
- A strong commitment from across early years charities, organisations and the workforce to improving how we support families during the 1,001 critical days.
- Sometimes, professionals and volunteers do not know what good joined up services would look like for that family.

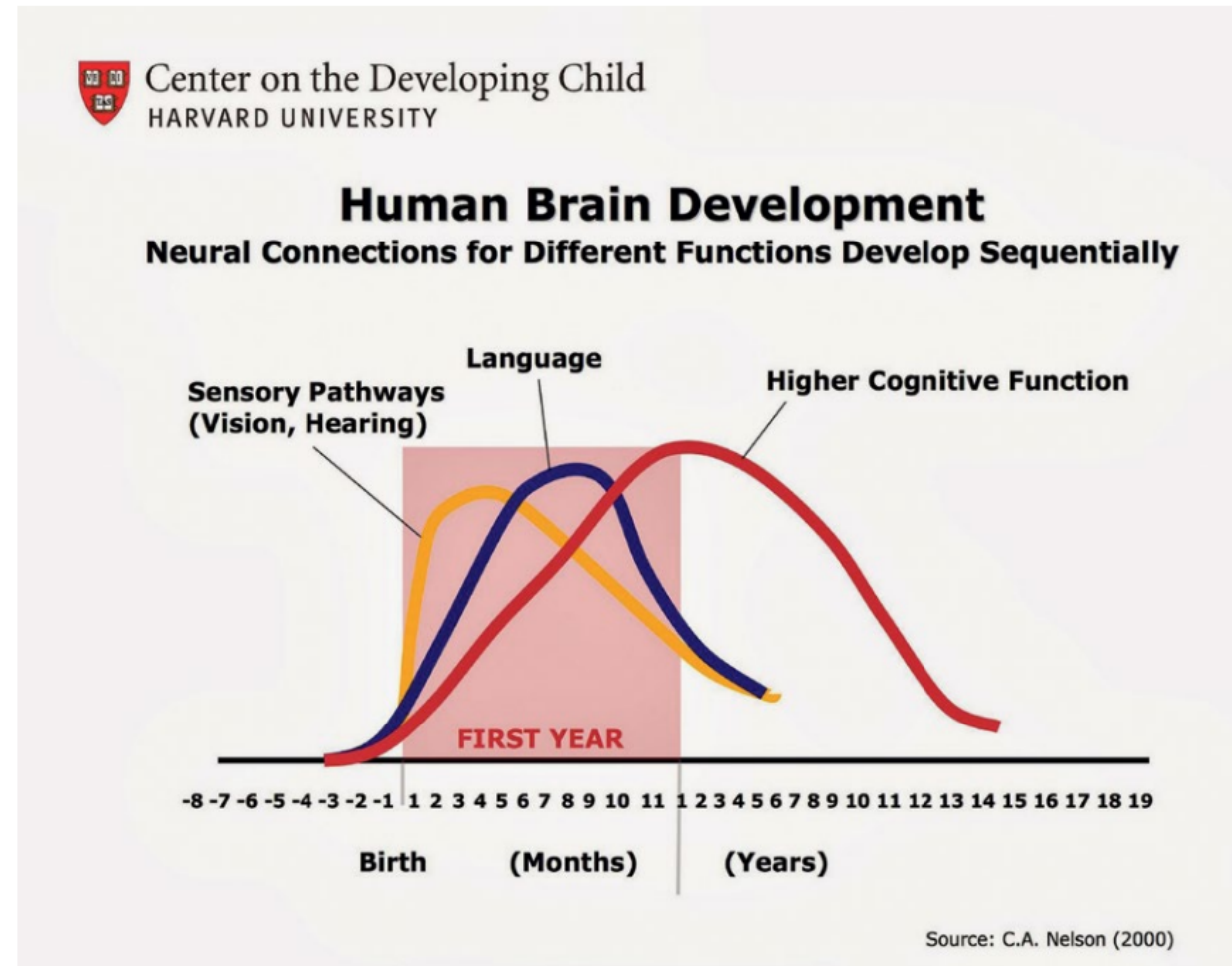
What the review heard:

- Some families don't have confidence in the services and support in their area and it isn't clear who is accountable at either a local or a national level for ensuring every baby is given the best start for life.
- It can be hard to know what's available in your local area, hard to know where you can go to get help and hard to find advice you can trust online. Parents and carers don't have data and information about their baby in a form they can access easily and share readily

Why the 1,001 critical days are critical

Science tells us that a child's experiences from conception through their first five years will go on to shape their next 50. It tells us that the kind of children we raise today, will reflect the kind of world we will live in tomorrow. It tells us that investing in the start of life is not an indulgence, but economically, socially and psychologically vital to a prosperous society."

– Jason Knauf, CEO of the Royal Foundation, December 2020

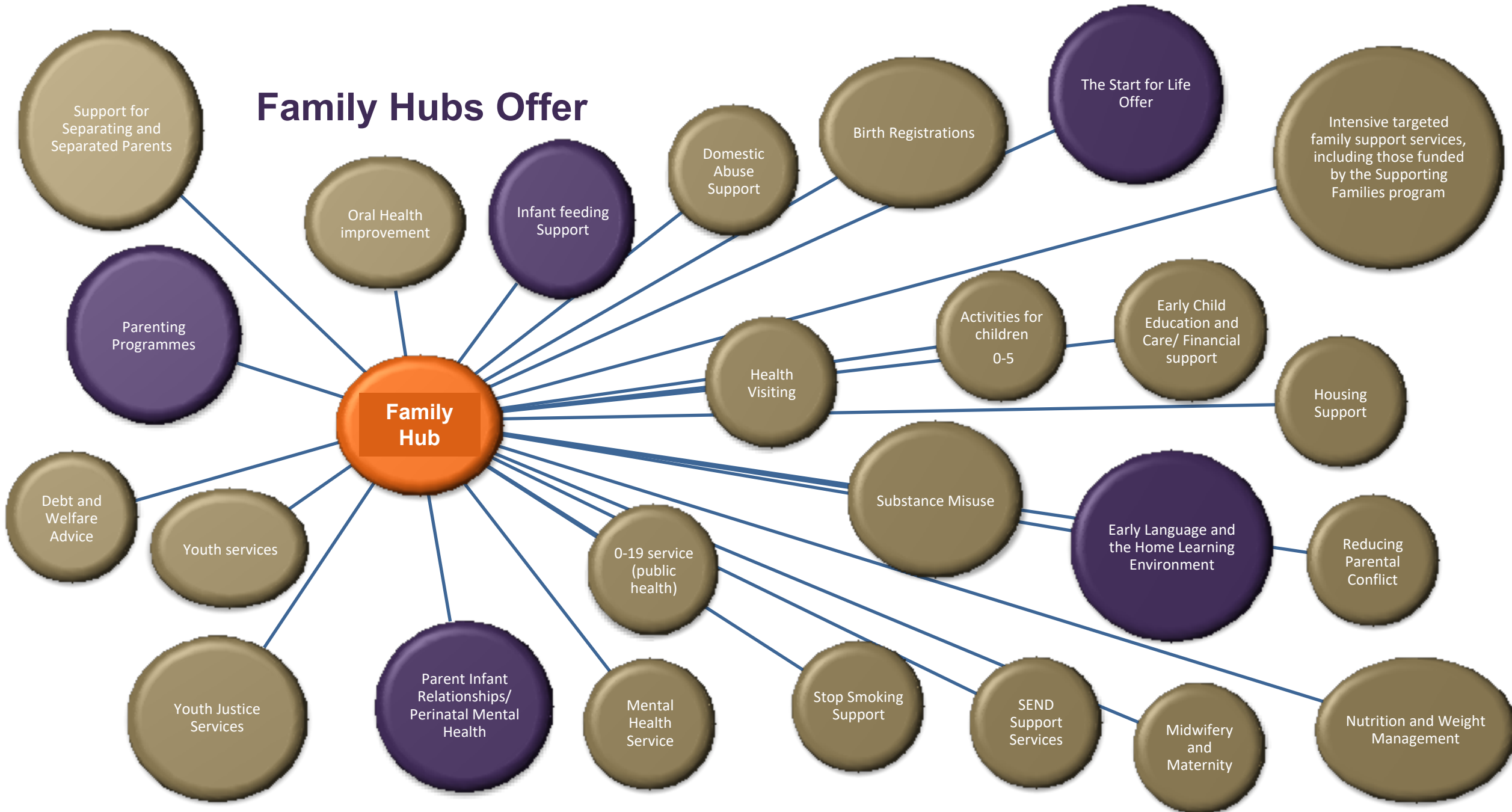


Family Hubs

Programme Objectives:

- Provide support to parents and carers so they are able to nurture their babies and children, improving health and education outcomes for all.
- Contribute to a reduction in inequalities in health and education outcomes for babies, children and families across England by ensuring that support provided is communicated to all parents and carers, including those who are hardest to reach and/or most in need of it .
- Build the evidence base for what works when it comes to improving health and education outcomes for babies, children and families in different delivery context.

Family Hubs Offer



Priority Workstreams

Priorities:

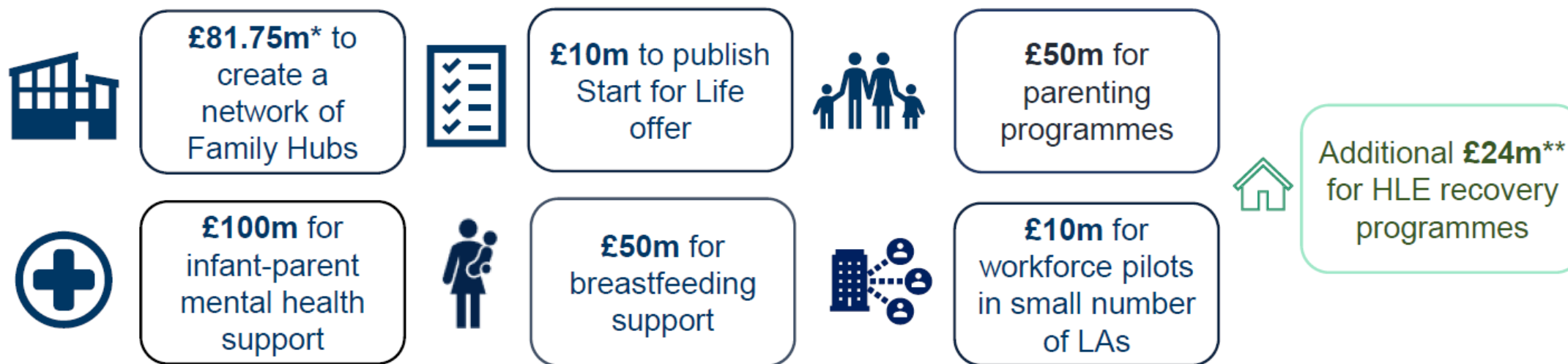
- Local Needs Assessment Public health
- Management Information Design and Collection
- Start for Life Offer
- Parent, Carer Panel
- Buildings upgrade

Funded Areas

Investment and Funding

At the Autumn Budget, the Government committed £301.75m for 75 upper-tier local authorities to deliver start for life and family help services over the next three financial years.

The package contains funding for the following components:



* This funding is in addition to previous £39.5m family hubs funding which includes the £12m transformation fund

** This forms part of the £153 million of new funding announced June 2021 to aid early years educational recovery

Finance

Funding Strand	% of Total Funding	Year 1	Year 2		Year 3		Total (Y1-Y3)	
			Lower Range	Upper Range	Lower Range	Upper Range	Lower Range	Upper Range
Family Hubs Programme Spend	19.6%	£177,576	£287,532	£303,604	£240,688	£253,428	£705,796	£734,608
Family Hubs Capital Spend	4.9%	£43,941	£71,150	£75,127	£59,558	£62,711	£174,649	£181,778
Parenting Support	15.7%	£142,242	£230,319	£243,193	£192,796	£203,001	£565,357	£588,436
Home Learning Environment	9.1%	£81,993	£132,764	£140,185	£111,134	£117,017	£325,891	£339,194
Parent-Infant Relationships and Perinatal Mental Health	31.1%	£281,766	£456,237	£481,739	£381,908	£402,123	£1,119,911	£1,165,628
Infant Feeding Support	16.2%	£146,772	£237,654	£250,938	£198,936	£209,466	£583,362	£607,176
Publishing Start for Life Offers and Parent Carer Panels	3.5%	£31,710	£51,345	£54,215	£42,980	£45,255	£126,035	£131,180
Total		£906,000	£1,467,000	£1,549,000	£1,228,000	£1,293,000	£3,601,000	£3,748,000

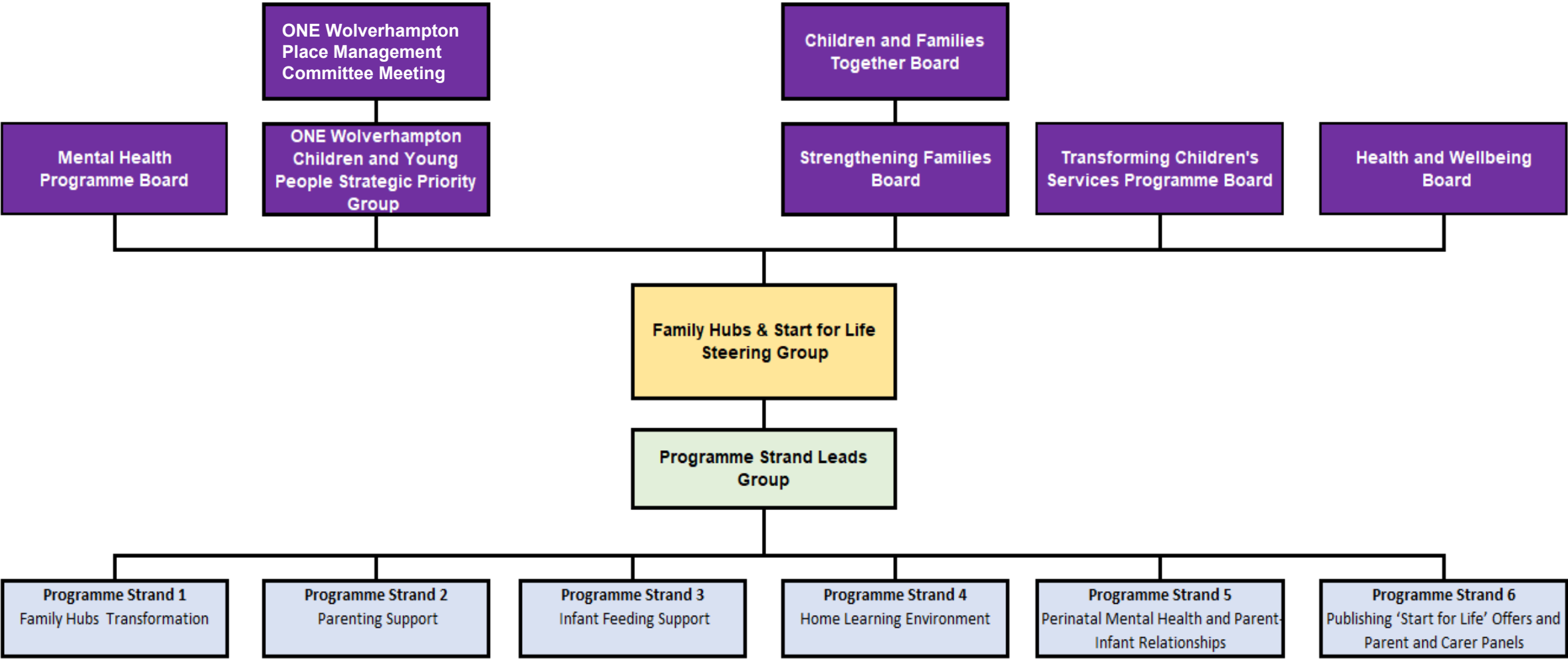
Next steps and initial milestones



Vision & Underlying Principles

- To build on the relational approach and champion the family hub model.
- Develop best practice around integration of services for families.
- A centre point of support.
- Reflecting the locality in their variety.

Governance



Performance Monitoring

There will be three elements of reporting:

- programme delivery returns
- financial returns
- management information

Taken together, these reporting expectations will provide us with the data we need to:

- monitor programme delivery
- develop the evidence base
- understand what good delivery looks like
- identify areas where additional support is required